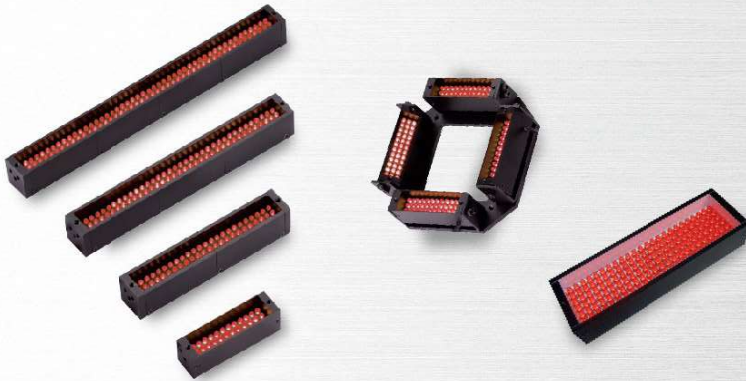


# Bar Lights & Oblique Bar lights



## Outline

Light direction and angle are adjustable.  
Suitable for large area lighting.

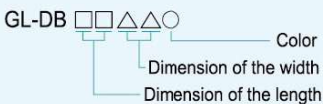
## Feature

1. Light can be customized. The largest standard model is 510mm.
2. Its shape is changeable to rectangular or square.
3. Diffusion plates are available. (P91)

## Major applications

1. Inspection for LED defect
2. Identify for multiple shapes
3. Fabrication substrates crack inspection, metal board surface inspection
4. Identify size measurement and shape for electronic parts

## Model explanation



## Available Models

Model	Color	Power Consumption	Weight (g)	Dimension
GL-DB3010R-24	●	24V/0.48W		
GL-DB3010W/B/G-24	○ ● ●	24V/0.72W	25	1
GL-DB3010IR-24	●	24V/0.48W		
GL-DB3010R-DP-24	●	24V/0.48W		
GL-DB3010W/B/G-DP-24	○ ● ●	24V/0.72W	26	2
GL-DB3010IR-DP-24	●	24V/0.48W		
GL-DB4520W/B/G-24	○ ● ●	24V/1.44W	36	3
GL-DB6020R-24	●	24V/1.44W		
GL-DB6020W/B/G-24	○ ● ●	24V/2.16W	41	4
GL-DB6020IR-24	●	24V/1.44W		
GL-DB8020W/B/G-24	○ ● ●	24V/2.88W	51	5
GL-DB11020R-24	●	24V/2.88W		
GL-DB11020W/B/G-24	○ ● ●	24V/4.32W	72	6
GL-DB11020IR-24	●	24V/2.88W		
GL-DB16020R-24	●	24V/4.32W		
GL-DB16020W/B/G-24	○ ● ●	24V/4.37W	101	7
GL-DB16020IR-24	●	24V/4.32W		
GL-DB21020R-24	●	24V/5.76W		
GL-DB21020W/B/G-24	○ ● ●	24V/8.64W	131	8
GL-DB21020IR-24	●	24V/5.76W		
GL-DB26020R-24	●	24V/7.2W		
GL-DB26020W/B/G-24	○ ● ●	24V/10.8W	160	9
GL-DB26020IR-24	●	24V/7.2W		
GL-DB31020R-24	●	24V/8.64W		
GL-DB31020W/B/G-24	○ ● ●	24V/12.96W	190	10
GL-DB31020IR-24	●	24V/8.64W		
GL-DB36020R-24	●	24V/10.08W		
GL-DB36020W/B/G-24	○ ● ●	24V/14.88W	222	11
GL-DB36020IR-24	●	24V/10.08W		

## Imaging examples



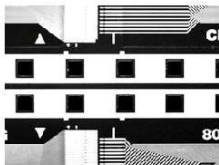
**GL-DB6020B**

DSP IC



**GL-DB6020W**

CF Card Character



**GL-DB6020W**

Soft Bus

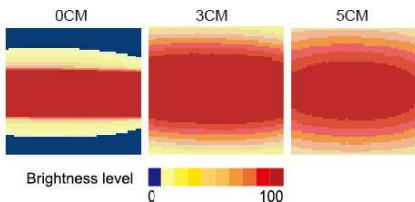
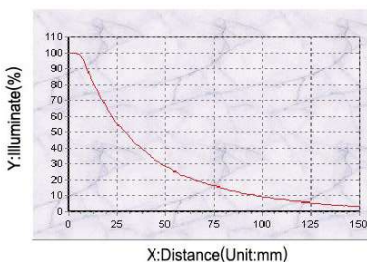


**GL-DB6020W\*2**

Terminal

## Luminous intensity distribution characteristics

**GL-DB6020R Graph**



## Available Models

Model	Color	Power Consumption	Weight (g)	Dimension
GL-DB41020R-24	●	24V/11.52W		
GL-DB41020W/B/G-24	○ ● ●	24V/17.28W	253	12
GL-DB41020IR-24	●	24V/11.52W		
GL-DB46020R-24	●	24V/12.96W		
GL-DB46020W/B/G-24	○ ● ●	24V/19.2W	285	13
GL-DB46020IR-24	●	24V/12.96W		
GL-DB51020R-24	●	24V/14.4W		
GL-DB51020W/B/G-24	○ ● ●	24V/21.6W	317	14
GL-DB51020IR-24	●	24V/14.4W		
GL-DB6034R-24	●	24V/2.88W		
GL-DB6034W/B/G-24	○ ● ●	24V/4.32W	60	15
GL-DB6034IR-24	●	24V/2.88W		
GL-DB11034R-24	●	24V/5.76W		
GL-DB11034W/B/G-24	○ ● ●	24V/8.64W	93	16
GL-DB11034IR-24	●	24V/5.76W		
GL-DB16034R-24	●	24V/8.64W		
GL-DB16034W/B/G-24	○ ● ●	24V/12.96W	130	17
GL-DB16034IR-24	●	24V/8.64W		
GL-DB21034R-24	●	24V/11.52W		
GL-DB21034W/B/G-24	○ ● ●	24V/17.28W	160	18
GL-DB21034IR-24	●	24V/11.52W		
GL-DB26034R-24	●	24V/14.4W		
GL-DB26034W/B/G-24	○ ● ●	24V/21.6W	189	19
GL-DB26034IR-24	●	24V/14.4W		
GL-DB31034R-24	●	24V/17.28W		
GL-DB31034W/B/G-24	○ ● ●	24V/25.96W	300	20
GL-DB31034IR-24	●	24V/17.28W		
GL-DB6020R4-24	●	24V/(1.44W)*4		
GL-DB6020W4/B4/G4-24	○ ● ●	24V/(2.16W)*4	280	21
GL-DB6020IR4-24	●	24V/(1.44W)*4		
GL-DB8020W4-24	○	24V/(2.88W)*4	384	22
GL-DB11020R4-24	●	24V/(2.88W)*4		
GL-DB11020W4/B4/G4-24	○ ● ●	24V/(4.4W)*4	511	23
GL-DB11020IR4-24	●	24V/(2.88W)*4		
GL-DB11034R4-24	●	24V/(5.8W)*4		
GL-DB11034W4/B4/G4-24	○ ● ●	24V/(8.7W)*4	460	24
GL-DB11034IR4-24	●	24V/(5.8W)*4		
GL-DB16020R4-24	●	24V/(4.32W)*4		
GL-DB16020W4/B4/G4-24	○ ● ●	24V/(4.37W)*4	667	25
GL-DB16020IR4-24	●	24V/(4.32W)*4		
GL-DB21034R4-24	●	24V/(11.52W)*4		
GL-DB21034W4/B4/G4-24	○ ● ●	24V/(17.28W)*4	943	26
GL-DB21034IR4-24	●	24V/(11.52W)*4		
GL-DB31020R4-24	●	24V/(8.64W)*4		
GL-DB31020W4/B4/G4-24	○ ● ●	24V/(12.96W)*4	1286	27
GL-DB31020IR4-24	●	24V/(8.64W)*4		

# Dimensional Diagrams(mm)

